

FLEX - PLUS 5000-2700

Led Strip



Alimentazione / Operating Voltage	24 V
Potenza / Power	25 W/mt
Larghezza Pcb / Width Pcb	15 mm
Altezza / Height Stripe	2 mm
Lunghezza / Length Stripe	5000 mm
Taglio segmento/ Length per Cut	56 mm
N° LED	144 / mt
IP	20
Temperatura esercizio Storage Temperature	- 30° C - + 70°C
Lifetime	L70B20 50000H

	Flusso Luminoso Luminous Flux	Efficienza Efficiency	Colore Luce Led Color
DA-PLUS-5000-2700	3721 lm/mt	135 lm/W	2700 K



Via Cadorna, 40/42
20032 Cormano (MI)
Tel. +39 02 84269630
Fax +39 02 84269631
info@dadalighting.com
www.dadalighting.com

FLEX - PLUS 5000-2700

Led Strip

Light efficiency:

149 Lumen/Watt

Output: 3721 lm

Light quality:

CRI: 80,8

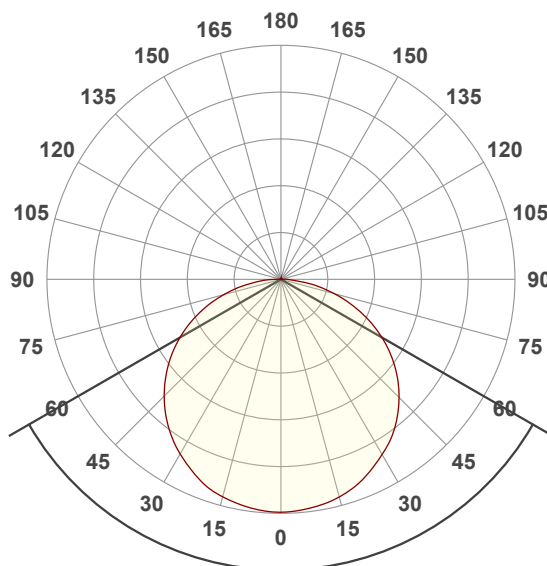
Peak: 1174 cd

Color temperature:

2743 K

Power: 25,0 W

24,0V @ 1,04A



Beam angle

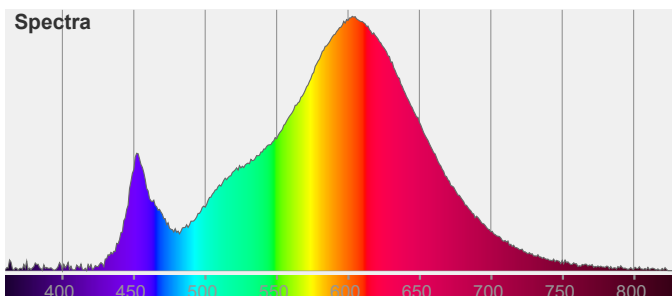
120,1°

Color



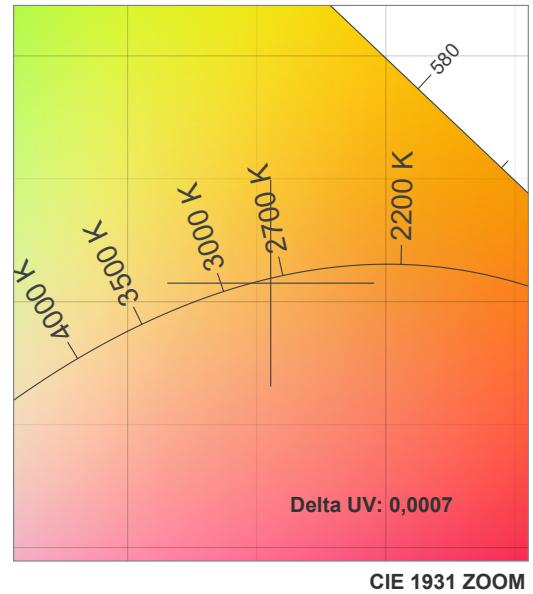
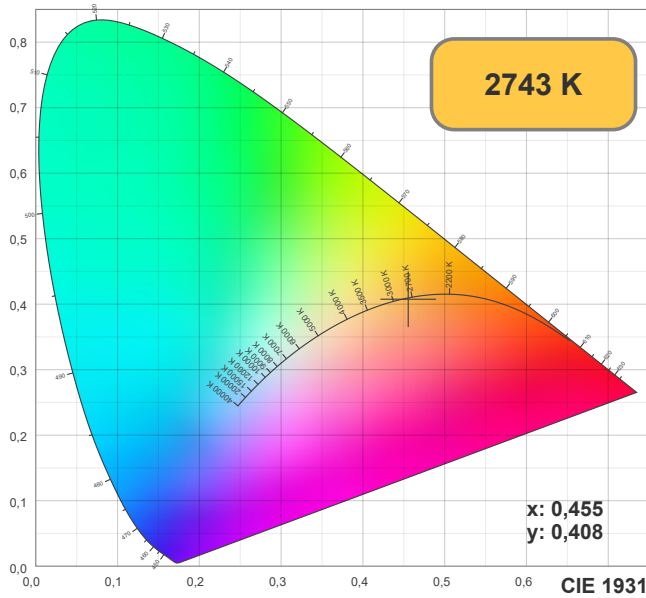
CIE1931
x: 0,455
y: 0,408

Spectra

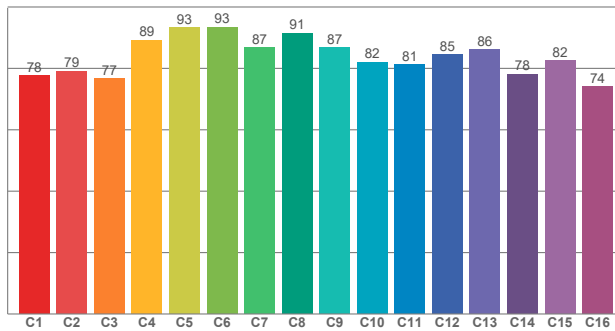


FLEX - PLUS 5000-2700

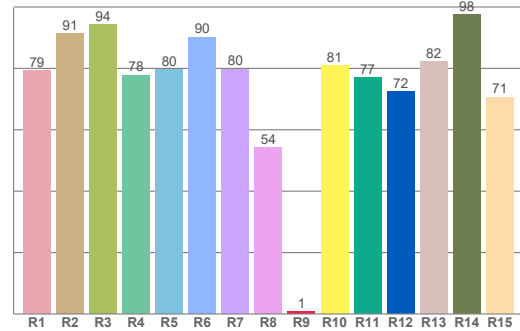
Led Strip



TM30: 83,6



CRI: 80,8 (R1-R8)



CRI R values, only R1-R8 are used to calculate final CRI value

R1	R2	R3	R4	R5	R6	R7	R8	R9	R10	R11	R12	R13	R14	R15
79,30	91,37	94,21	77,78	79,50	90,23	79,71	54,09	0,80	80,98	77,02	72,36	82,24	97,54	70,65

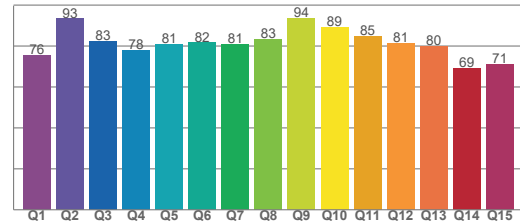
TM30 C values, 16 binned values out of total of 99 C values

C1	C2	C3	C4	C5	C6	C7	C8	C9	C10	C11	C12	C13	C14	C15	C16
77,66	79,11	76,69	89,20	93,26	93,43	86,76	91,46	86,74	81,98	81,27	84,56	86,05	78,10	82,42	74,05

CQS Q values

Q1	Q2	Q3	Q4	Q5	Q6	Q7	Q8	Q9	Q10	Q11	Q12	Q13	Q14	Q15
75,64	93,43	82,57	78,10	80,87	81,65	81,00	83,49	93,60	89,33	85,00	81,31	79,96	69,18	71,22

CQS: 80,4

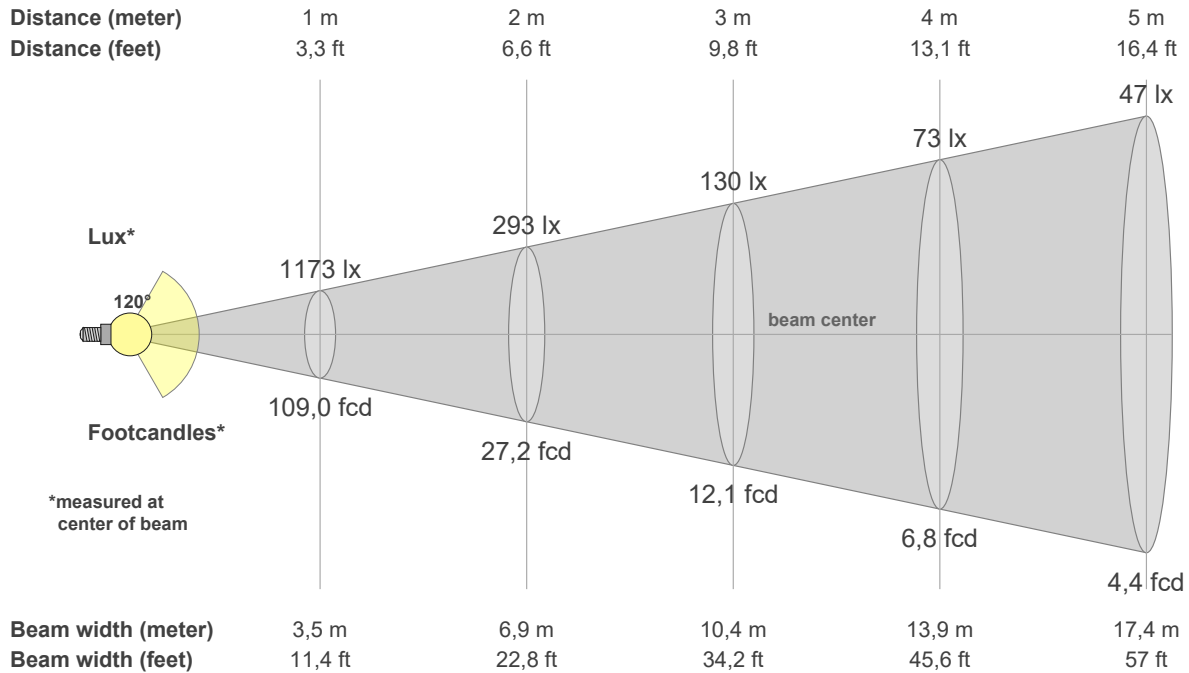


Color parameters

CCT	CRI	CRI R9	TM30 Rf	TM30 Rg	CQS	x	y	u	v	Duv
2743 K	80,8	0,8	83,6	94,8	80,4	0,5	0,4	0,3	0,4	-0,0008

FLEX - PLUS 5000-2700

Led Strip



Intensities in 0° c-plane

0°	5°	10°	15°	20°	25°	30°	35°	40°	45°	50°	55°	60°	65°	70°	75°	80°	85°	90°	95°
1173	1168	1155	1135	1108	1065	1020	973	910	841	767	680	588	491	385	281	178	90	31	4
100%	100%	99%	97%	94%	91%	87%	83%	78%	72%	65%	58%	50%	42%	33%	24%	15%	8%	3%	0%

Intensities in 0° c-plane

0°	5°	10°	15°	20°	25°	30°	35°	40°	45°	50°	55°	60°	65°	70°	75°	80°	85°	90°	95°
1173	1168	1155	1135	1108	1065	1020	973	910	841	767	680	588	491	385	281	178	90	31	4
100%	100%	99%	97%	94%	91%	87%	83%	78%	72%	65%	58%	50%	42%	33%	24%	15%	8%	3%	0%

Intensities in 180° c-plane

0°	5°	10°	15°	20°	25°	30°	35°	40°	45°	50°	55°	60°	65°	70°	75°	80°	85°	90°	95°
1173	1169	1156	1134	1106	1064	1016	963	902	832	757	677	588	496	400	301	204	113	50	10
100%	100%	99%	97%	94%	91%	87%	82%	77%	71%	65%	58%	50%	42%	34%	26%	17%	10%	4%	1%

Intensities in 180° c-plane

0°	5°	10°	15°	20°	25°	30°	35°	40°	45°	50°	55°	60°	65°	70°	75°	80°	85°	90°	95°
1173	1169	1156	1134	1106	1064	1016	963	902	832	757	677	588	496	400	301	204	113	50	10
100%	100%	99%	97%	94%	91%	87%	82%	77%	71%	65%	58%	50%	42%	34%	26%	17%	10%	4%	1%

Beam angle 50%	Field angle 10%	Cutoff angle 2,5%	Intensity ratio in 120° cone	Intensity ratio in 90° cone
120,1°	168,2°	182,1°	74,8%	49,8%